




## Ramsdean Road, Petersfield, GU32 3PJ

Guide Price £825,000

 3  2  2



Solent is a stunning family home that has been cleverly designed and recently extended and modernised to create a very versatile and modern living environment.

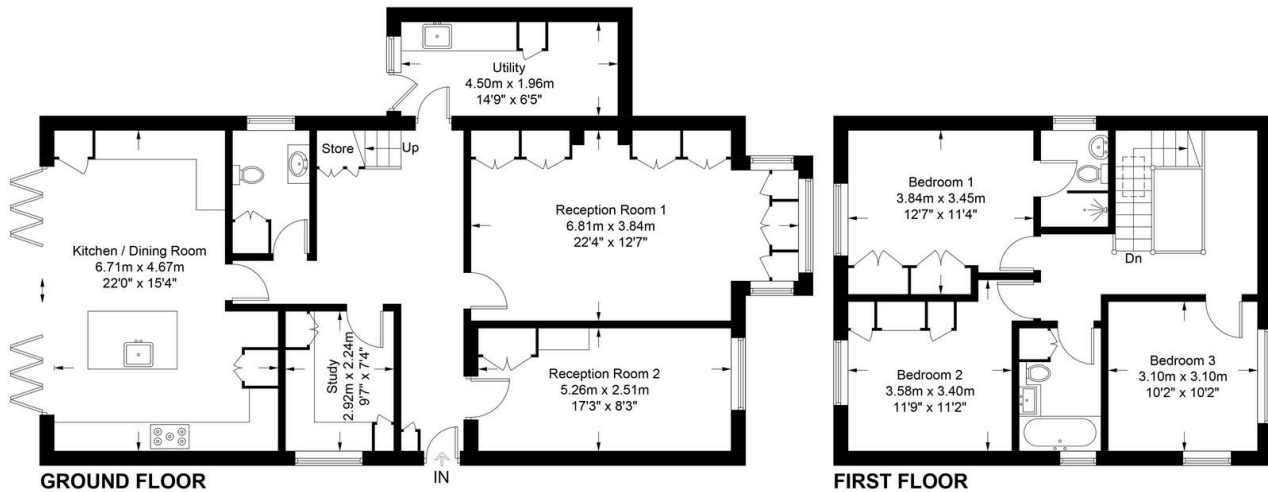
# DANIEL ARROWSMITH



## Key Features

- Beautifully Presented Family Home
- Two Reception Rooms
- Stunning Kitchen and Dining Room
- Versatile Layout
- Gorgeous Countryside Setting
- Three Double Bedrooms
- Home Office
- Separate Utility and Boot Room
- Driveway Parking
- Rural Village Location within Commuting Distance

Approximate Gross Internal Area = 164.3 sq m / 1768 sq ft



These plans are for representation purposes only as defined by RICS - Code of Measuring Practice. Not to Scale.  
(ID1095186)